



Sewer Scope Inspection

LOCATED AT:
123 Main St
Richmond, VA 23221

PREPARED EXCLUSIVELY FOR:
John Doe

INSPECTED ON:
Thursday, November 16, 2023



Inspector: Inspector Name
North Star Environmentals
530-C Southlake Blvd
N Chesterfield, VA 23236
(855) 994-3400

INTRODUCTORY NOTES

INSPECTION DATE

11/16/2023

START TIME

1:18:00 PM

SQUARE FOOTAGE

2032

YEAR BUILT

1910

AGE

112 year(s)

RESTRICTIONS

3: Due to the heavy intrusion of roots, portions the main sewer line/pipe were not visible for inspection.

4: The camera could not advance past 91 feet due to the turns and issues found. The camera was not able to reach the city tap. The sewer scope inspection was limited to areas viewed.

Clean Out

LOCATION OF CLEAN OUT

5: The clean out was located on the exterior of the building on the right side of the home.

CONDITION OF CLEANOUT

6: The clean out access was in good condition.



Representative

Lateral Sewer Line

DRAIN LINE MATERIAL

7: SDR 35

8: PVC

9: ABS

10: Clay

11: Cast Iron - Cast iron pipe rusts from the inside out. The inspection report will note if there is rust inside the cast iron pipe, but it is beyond the scope of this inspection to determine if the pipe has been rusted through.

OFFSETS

12: An offset was visible in the main sewer line/pipe at approximately 89 feet from the access point.



Representative

ROOTS

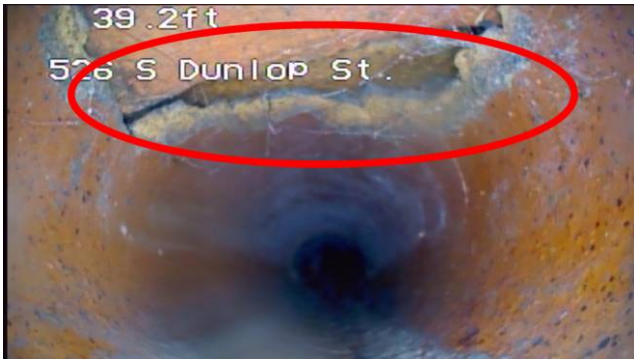
13: Root intrusion at a joint was visible in the main sewer line/pipe at multiple locations.





DAMAGED PIPE

14: The main sewer line/pipe appeared to be broken / damaged at approximately 39 feet from the access point.



ISSUES INSIDE THE PIPE

15: Heavy rust / scale was visible in the cast iron portion of the main sewer line/pipe.



Rust and corrosion on the cast iron portion.

16: Heavy grease build up was visible in the main sewer line/pipe.



Representative



Representative

Recommendations

The sewer scope was ran through the sewer line from an access point. Any drain lines before the access point were not part of this inspection.

REPAIRS

17: The main sewer line/pipe should be cleaned for roots annually to minimize the potential for blockage.

18: The clay portion of the pipe was damaged at approximately 39 feet from the access point. The main sewer line/pipe should be repaired or replaced as needed and re-inspected with a camera.

19: Once the repair has been made, the pipe should be cleaned / hydro-jetted of roots, grease, and scale, and re-inspected with a camera.